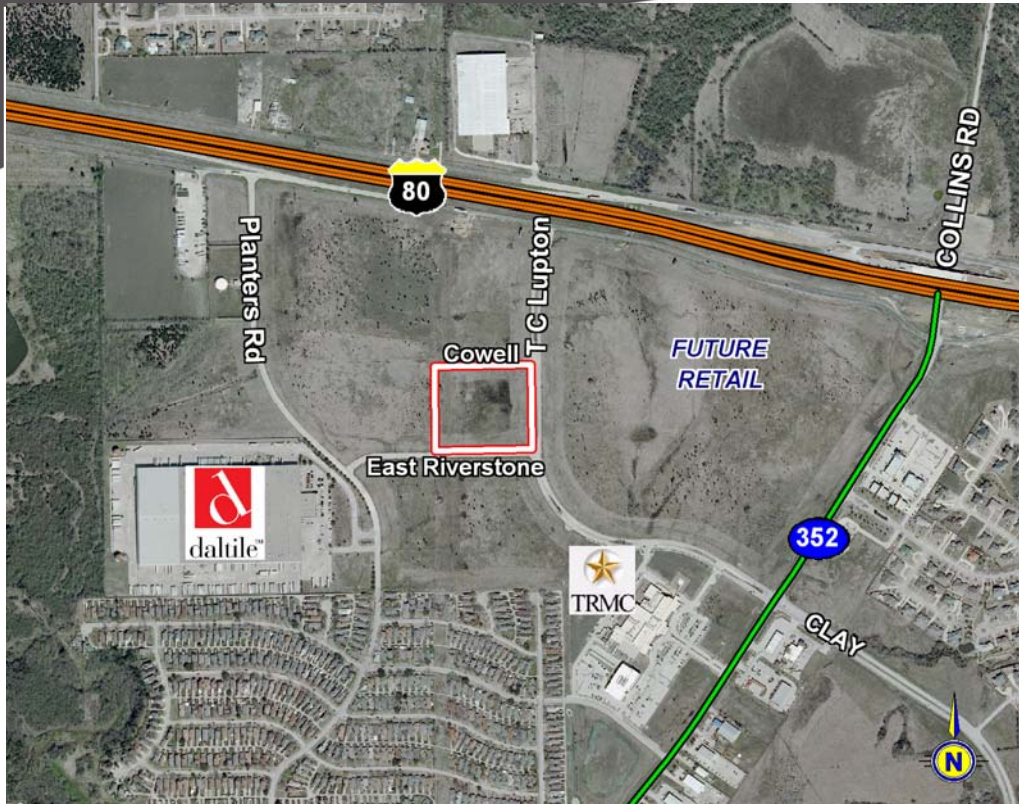


# 6+/- ACRES LAND

T.C. LUPTON BLVD. B/W COWELL & RIVERSTONE | SUNNYVALE, TX

# FOR SALE



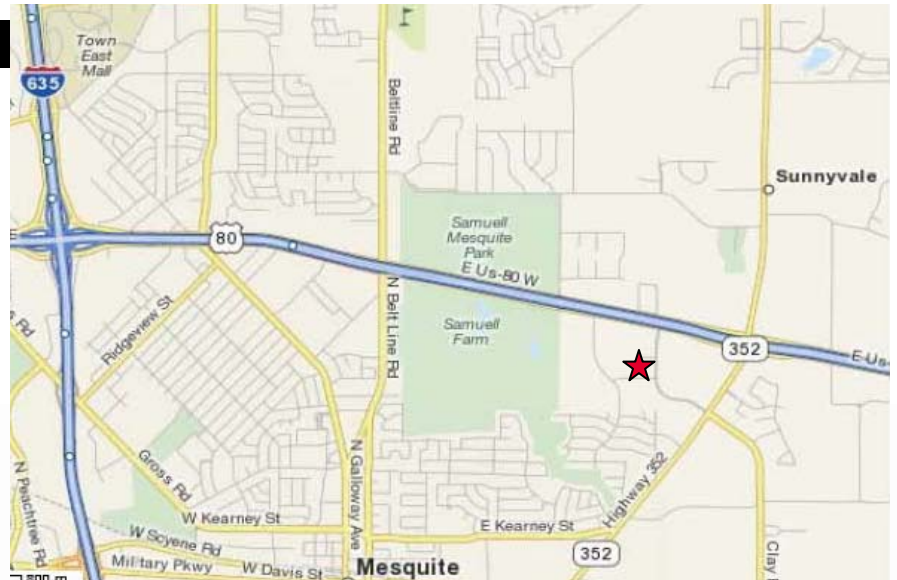
## LOCATION

- Located approximately 200 yards south of US Highway 80 on the west side of T.C. Lupton Blvd. between Cowell and Riverstone, with over 500 feet of road frontage on each street.
- The site is approximately 250 yards from the new hospital, Texas Regional Medical Center. More information can be found online at [TexasRegionalMedicalCenter.com](http://TexasRegionalMedicalCenter.com)

**CONTACT BROKER DIRECTLY FOR PRICING DETAILS**

## PROPERTY DETAILS

- SIZE: 6 +/- Acres
- ZONING: Industrial - Allows Most Uses
- UTILITIES:
- Water  
8" Line on N/S of Riverstone  
12" Line on E/S of T.C. Lupton  
12" Line on N/S of Cowell
  - Sewer  
8" Line on W/S of T.C. Lupton  
8" Line on S/S of Riverstone
- Part of Riverstone Business Park, but not subject to deed restrictions



## FOR DETAILED INFORMATION:

**ROBERT STONE, CCIM**  
**Executive Vice President**  
 Multi-Family / Senior Housing Division  
 972.419.4090 Direct  
[rstone@henrysmiller.com](mailto:rstone@henrysmiller.com)



**HENRY S. MILLER BROKERAGE, LLC**  
 Since 1914

AUSTIN DALLAS FORT WORTH HOUSTON SAN ANTONIO

Providence Towers West | 5001 Spring Valley Rd. #1100 | 972.419.4000 | [www.henrysmiller.com](http://www.henrysmiller.com)



The information contained herein was obtained from sources believed reliable, however Henry S. Miller Brokerage, LLC make no guarantees, warranties or representations as to the completeness or accuracy thereof. The information submitted is subject to errors, omissions, changes of price or conditions, prior sale or lease, or withdrawal without notice. Any projections, assumptions or estimates are for illustrative purposes only. Recipients should conduct their own investigations.